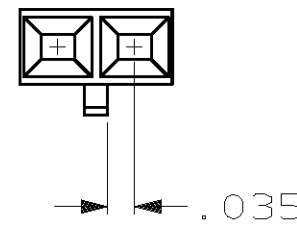
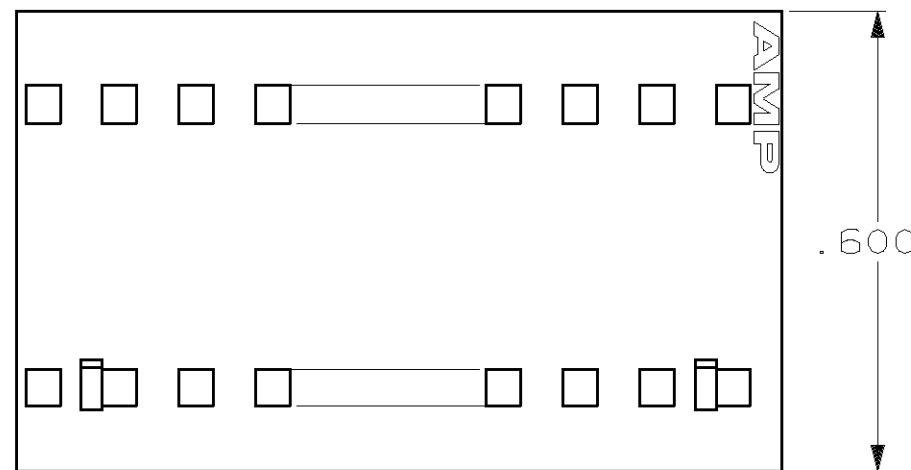
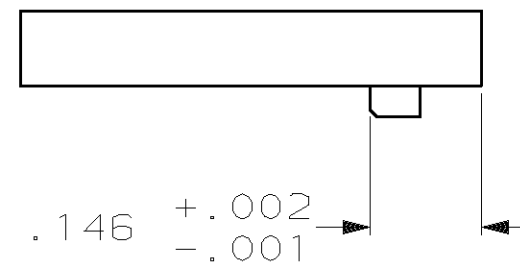
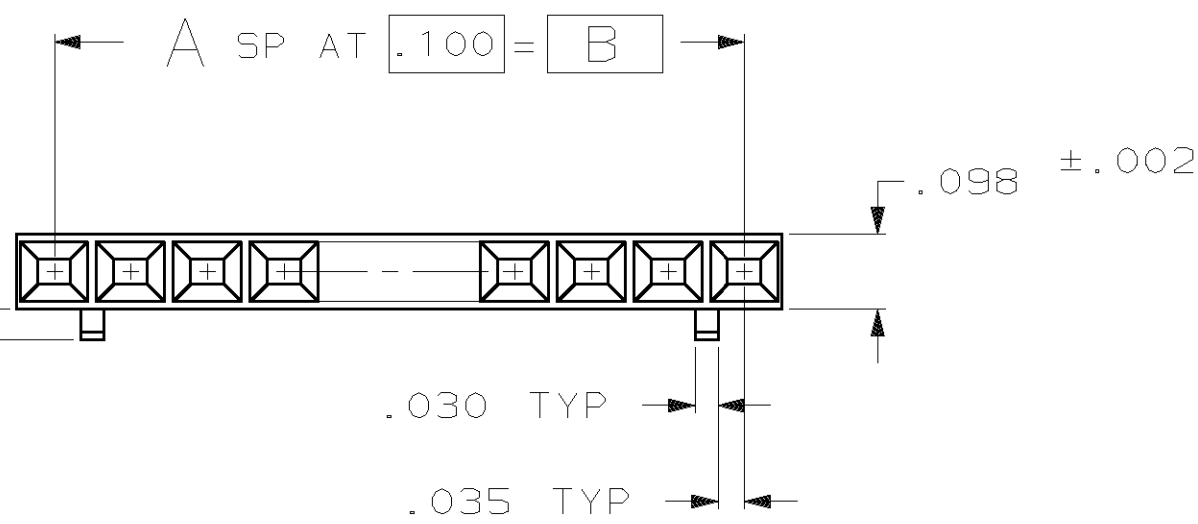
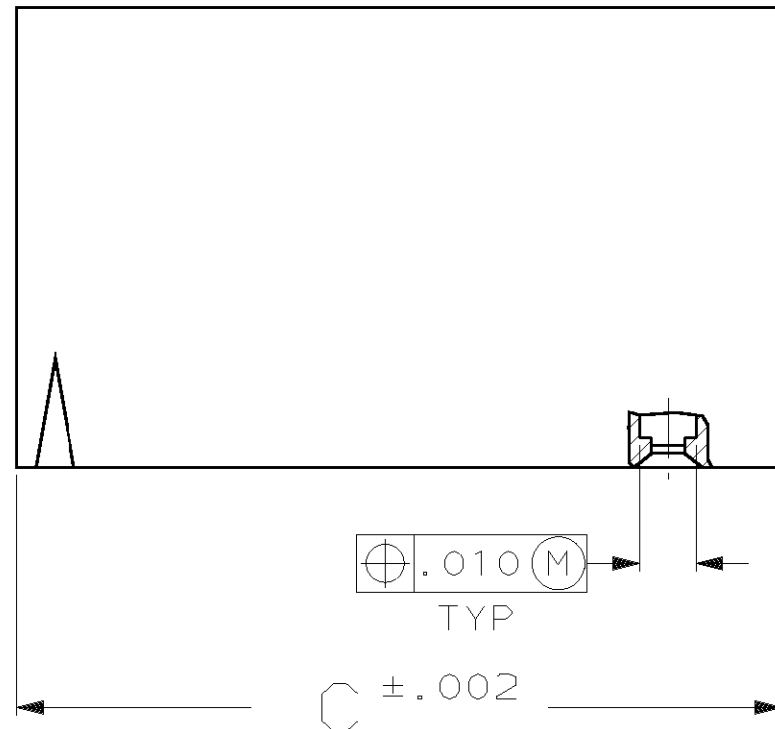


THIS DRAWING IS UNPUBLISHED. RELEASED FOR PUBLICATION, 19 .
 © COPYRIGHT 19 BY AMP INCORPORATED, HARRISBURG, PA. ALL INTERNATIONAL RIGHTS RESERVED. AMP PRODUCTS MAY BE COVERED BY U.S. AND FOREIGN PATENTS AND/OR PATENTS PENDING.

| LOC | DIST | P | F | ZONE | LTR | DESCRIPTION | DATE | APPROVED |
|-----|------|---|---|------|-----|--------------------------|----------|----------|
| AD | 39 | | | | B | REV-REDRAWN PER ECN 1770 | 12-16-87 | - |
| | | | | | C | REV LOC & DIST AD-4171 | 3-90 | BF |
| | | | | | D | REV PER 0010-0832-93 | 7-93 | JG |
| | | | | | E | REV PER 0010-1290-93 | 2-94 | JG |
| | | | | | F | REV PER 0010-0782-93 | 2-16-94 | JG |
| | | | | | G | REV PER 0010-1884-93 | 2-16-94 | JG |
| | | | | | H | REV PER 0010-0347-94 | 3-24-94 | JG |
| | | | | | J | REV PER 0010-1880-94 | 2-17-95 | JG |
| | | | | | K | REV PER 0G3C-0018-00 | 19JUL00 | KW |



DETAIL FOR -1 ONLY
(2 POSITION)



| | | | | |
|-------|-------|----|------------|-------------|
| 2.498 | 2.400 | 24 | 25 | 2-103648-4 |
| 2.398 | 2.300 | 23 | 24 | 2-103648-3 |
| 2.298 | 2.200 | 22 | 23 | 2-103648-2 |
| 2.198 | 2.100 | 21 | 22 | 2-103648-1 |
| 2.098 | 2.000 | 20 | 21 | 2-103648-0 |
| 1.998 | 1.900 | 19 | 20 | 1-103648-9 |
| 1.898 | 1.800 | 18 | 19 | 1-103648-8 |
| 1.798 | 1.700 | 17 | 18 | 1-103648-7 |
| 1.698 | 1.600 | 16 | 17 | 1-103648-6 |
| 1.598 | 1.500 | 15 | 16 | 1-103648-5 |
| 1.498 | 1.400 | 14 | 15 | 1-103648-4 |
| 1.398 | 1.300 | 13 | 14 | 1-103648-3 |
| 1.298 | 1.200 | 12 | 13 | 1-103648-2 |
| 1.198 | 1.100 | 11 | 12 | 1-103648-1 |
| 1.098 | 1.000 | 10 | 11 | 1-103648-0 |
| .998 | .900 | 9 | 10 | 103648-9 |
| .898 | .800 | 8 | 9 | 103648-8 |
| .798 | .700 | 7 | 8 | 103648-7 |
| .698 | .600 | 6 | 7 | 103648-6 |
| .598 | .500 | 5 | 6 | 103648-5 |
| .498 | .400 | 4 | 5 | 103648-4 |
| .398 | .300 | 3 | 4 | 103648-3 |
| .298 | .200 | 2 | 3 | 103648-2 |
| .198 | .100 | 1 | 2 | 103648-1 |
| C | B | A | NO OF POSN | PART NUMBER |

| | | | | |
|--|--|---|--|----------------------|
| UNLESS OTHERWISE SPECIFIED DIMENSIONS ARE IN INCHES TOLERANCES ON : 2 PL DEC ± - 3 PL DEC ± .005 ANGLES ± - | DR 12-16-87 M. PASTAL | AMP INCORPORATED Harrisburg, Pa. 17105 | | |
| | CHK 12-18-87 P. DeJONG | | | |
| | MATERIAL: FLAME RETARDANT THERMOPLASTIC; COLOR:BLACK | APPD 12-18-87 P. DeJONG | NAME RECEPTACLE HOUSING, AMPMODU [®] MTE, SINGLE ROW, .100¢, WITH GUIDE RIBS | |
| | FINISH: | APPD 12-22-87 J. SCHIEFFER | | |
| | PRODUCT SPEC 108-25034 | SIZE C | F5CM NO 00779 | DRAWING NO 103648 |
| | APPLICATION SPEC 114-25026 | SCALE 4:1 | SHEET 1 OF 1 | |
| | WEIGHT - | | | |